

*Thank you for your order!  
- John, Ztrains*

## LED Street Light Kit

Each street light (single or double head) is designed to work with a single Quick Connect wire connector.

### STEP 1

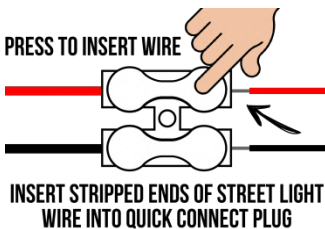
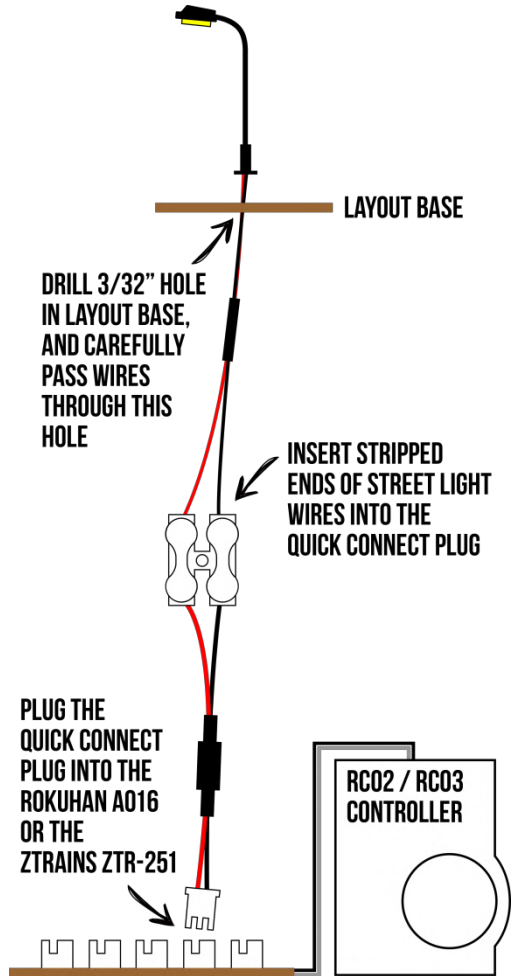
Drill a 3/32" hole in the layout base and carefully run the street light wire down through this hole.

### STEP 2

Insert the red and black wires into the Quick Connect plug **opposite** the red and black wires that come pre-connected to the Quick Connect plug. Simply press, insert the wires and release as illustrated below.

### STEP 3

With the controller **power off**, insert the Quick Connect plug into the Rokuhan A016 Power Terminal or the Ztrains ZTR-251 Accessory Distribution Box.



*The light base is adjustable for raising or lowering your lights, and can be secured to the layout by using a drop of glue. The included alcohol pads are for wiping down surfaces prior to attaching the adhesive backed wire clips. #4 screws are also included to attach the Quick Connect Plugs to your layout.*