

Thank you for your order!
- John, Ztrains

The Awfully Small Single LED

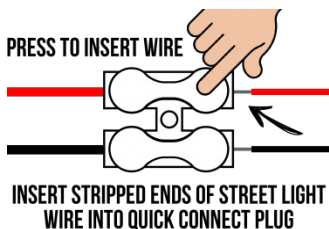
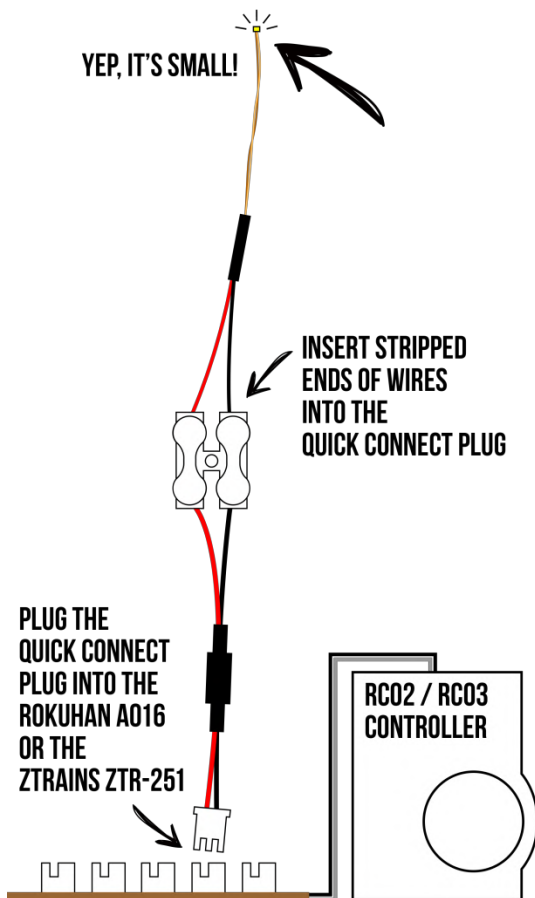
At only 1mm at its widest measurement, these LEDs are awfully small even by Z scale standards! A little extra care is called for when handling the twisted copper wire this LED is attached to.

We've made hook-up to the Rokuhan A016 or the Ztrains ZTR-251 Accessory Distribution Box very simple.

Directions:

Insert the pre-stripped red and black wires from the LED into the Quick Connect plug **opposite** the red and black wires that come pre-connected to the Quick Connect plug. Simply press, insert the wires and release as illustrated below.

With the controller **power off**, then insert the Quick Connect plug into the Rokuhan A016 Power Terminal or the Ztrains ZTR-251 Accessory Distribution Box.



The included alcohol pads are for wiping down surfaces prior to attaching the adhesive backed wire clips. A #4 screw is included to attach the Quick Connect Plugs to your layout.