

GETTING STARTED

PLEASE! READ THROUGH THE ENTIRE INSTRUCTIONS BEFORE BEGINNING ASSEMBLY.

WE RECOMMEND THAT ALL PARTS BE PAINTED BEFORE ASSEMBLY AND CAN BE PRIMED (IF NECESSARY) AND PAINTED WHILE THEY ARE STILL ON THE SPRUES.

WE RECOMMEND VALLEJO BRAND OF ACRYLIC COLORS AND CARPENTER'S WOOD GLUE FOR ASSEMBLY.

THE WINDOWS AND DOORS CAN ALSO BE PAINTED AND ATTACHED TO THE WALLS BEFORE ASSEMBLY. THE WINDOWS ARE CUT FROM A MATERIAL THAT HAS AN ADHESIVE BACKING. CLEAR FILM IS INCLUDED FOR GLAZING - REMOVE THE BACKING FROM THE WINDOW AND ATTACH TO THE GLAZING FIRST. THE OUTSIDE FRAME WILL HOLD THE WINDOW IN PLACE IN THE OPENING.

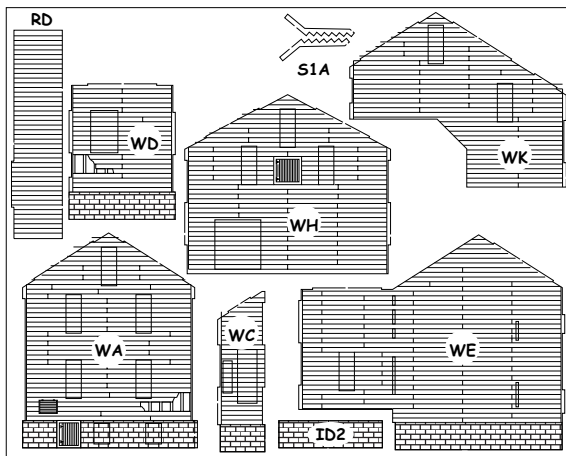
TEST FIT EACH PART BEFORE GLUEING - TRIM TO FIT IF NECESSARY.

PHOTO REFERENCE

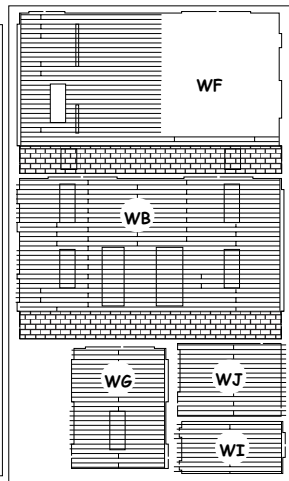


PARTS LAYOUT

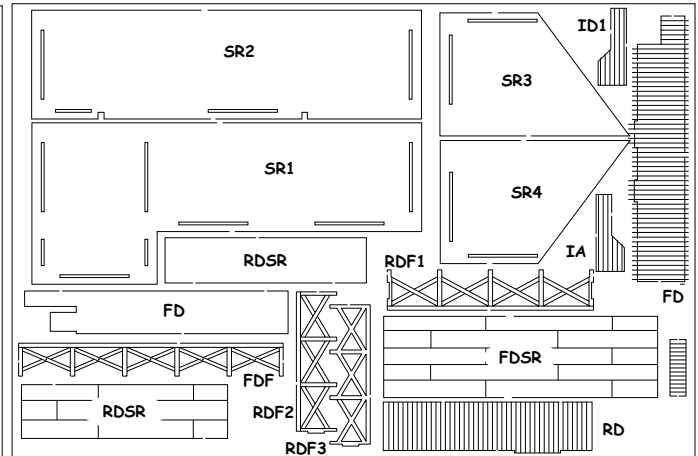
PARTS ARE MARKED AND CALLED OUT ON EACH STEP OF ASSEMBLY INSTRUCTIONS.



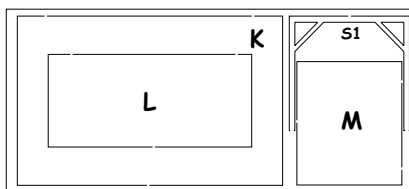
PARTS A



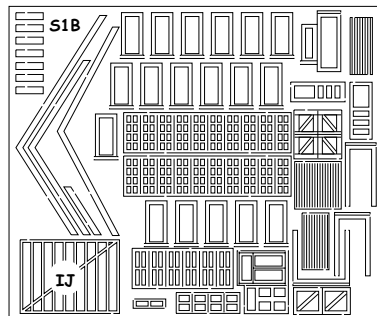
PARTS B



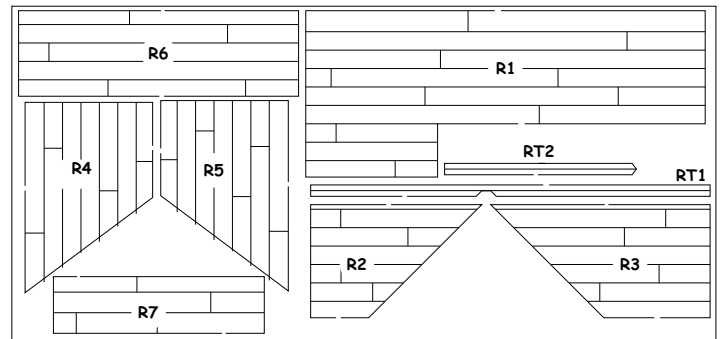
PARTS C



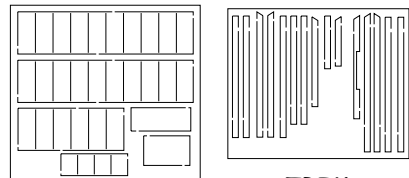
FLOORS



WINDOWS / DOORS / TRIM



ROOF



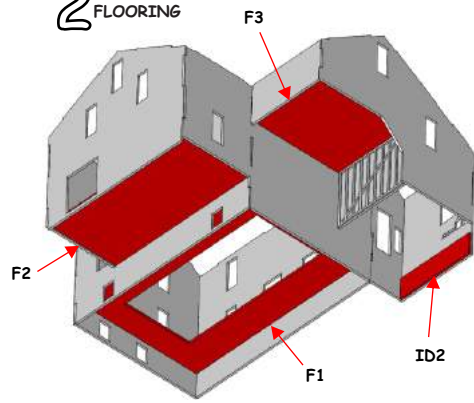
GLAZING

TRIM

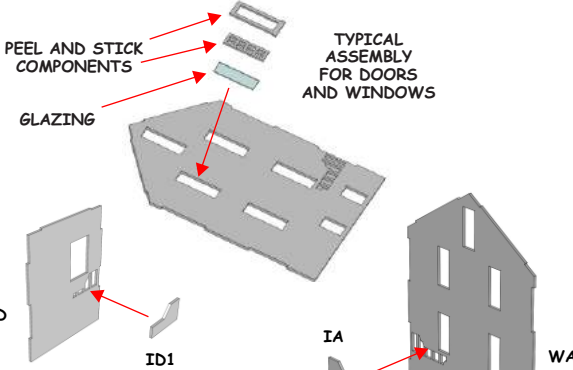
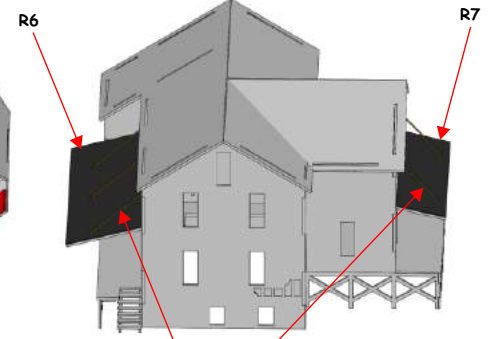


WE RECOMMEND:
PAINT THE WALLS, WINDOWS, DOORS AND TRIM BEFORE ASSEMBLY WHILE THEY ARE STILL ATTACHED TO THE SPRUE.
ASSEMBLE THE WINDOWS AND DOORS ON THE WALL PARTS BEFORE ASSEMBLING THE STRUCTURE.

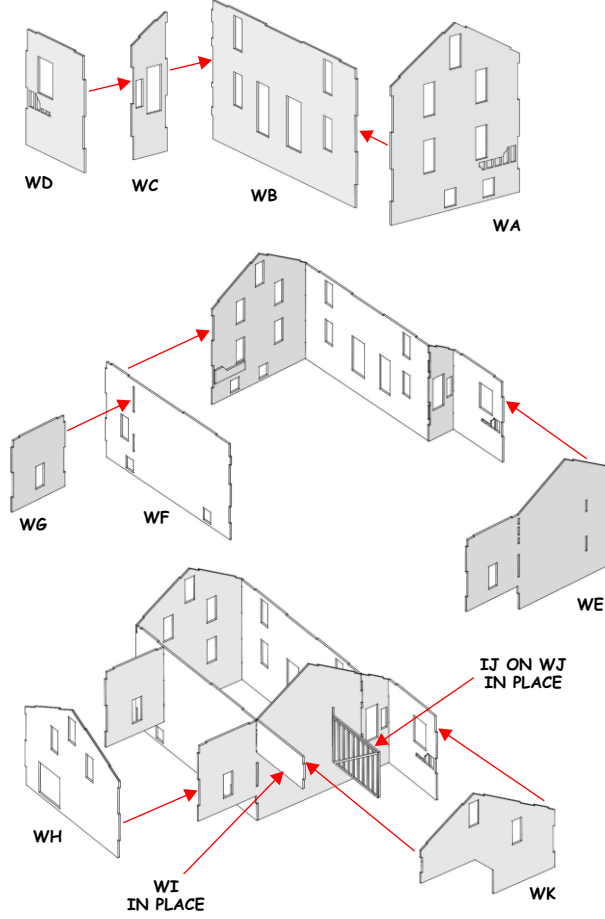
2 ADD THE FLOORING



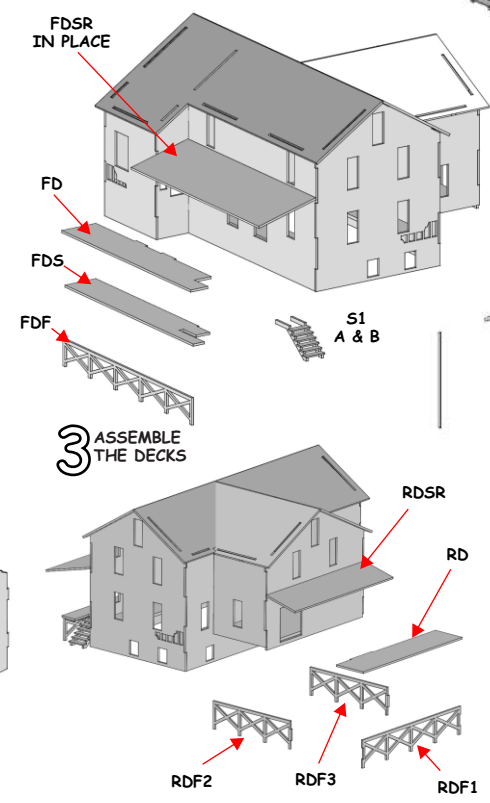
4 ATTACH THE ROOF



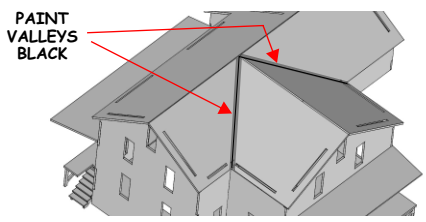
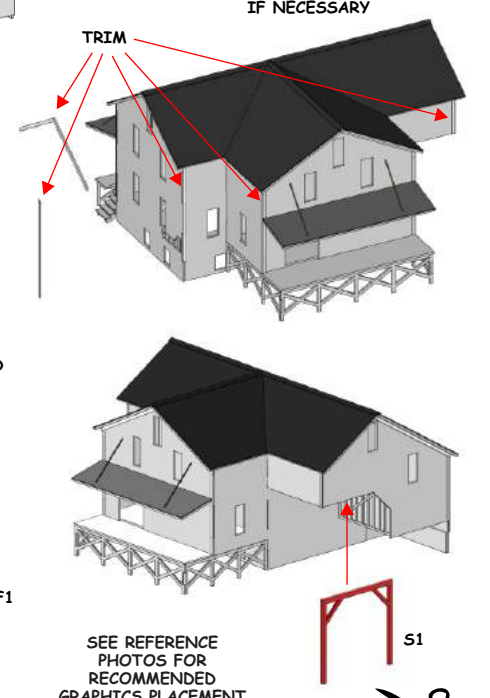
1 ASSEMBLE THE WALLS



3 ASSEMBLE THE DECKS



4 ADD THE TRIM



SEE REFERENCE PHOTOS FOR RECOMMENDED GRAPHICS PLACEMENT

