

Assembly Instructions For Z-Scale Studebaker US6 2 ½ ton Dump Truck



www.eaelec.com

Made in Canada

WARNING: CHOKING HAZARD
Keep out of reach of small children!

Note that these ARE NOT TOYS, AND ARE NOT INTENDED FOR USE BY CHILDREN UNDER AGE OF 14. These products are model railroad equipment and accessories intended for use by adults.

Production of the US6 truck started in 1941 and over 200,000 were built during World War 2. Over 150,000 were exported under the lend-lease program mostly to Russia. The US military used these trucks in the construction of the Burma Road and in North America on the Alcan (Alaska) highway.

Parts Included in the kit:

- A. 3D printed chassis.
- B. 3D printed cab with attached cargo bed
- C. One white star decal

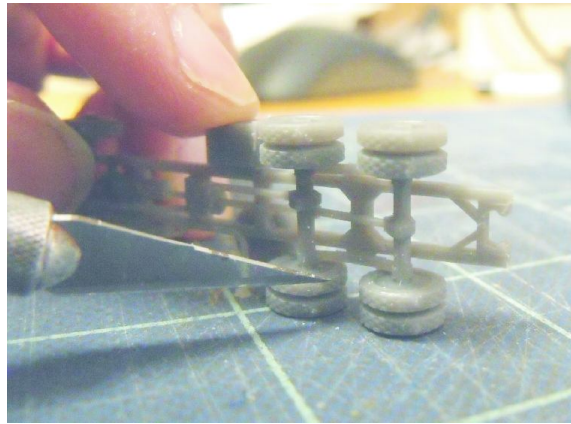
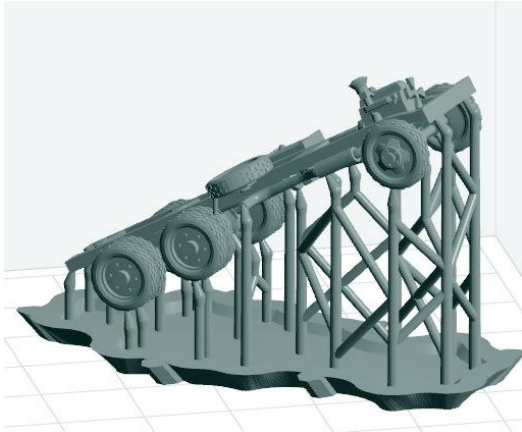
Required to complete the kit:

- Paint - Flat black and flat army olive for US Army (Testors 1165).
- Glue - Slow setting CA glue is best.

Tools Required:

- 1. X-acto knife with a sharp #11 blade.
- 2. #400 and #600 sandpaper.

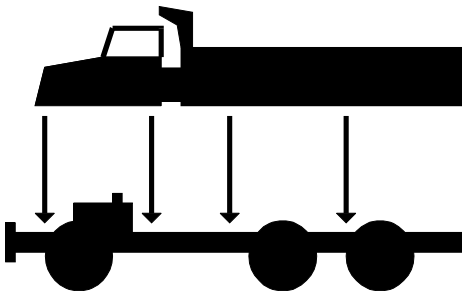
The 3D printing process requires a supporting frame during printing, see below left. The printed part is cut from the frame using flush cutters and this sometimes leaves small bumps on the part. Use a knife with a sharp new blade to cut away the bumps. When trimming bumps off the wheels you should place the wheel on a flat surface as shown below on the right. Putting too much stress on the wheel can cause the axle to break. For bumps on the cab body, sanding is recommended.



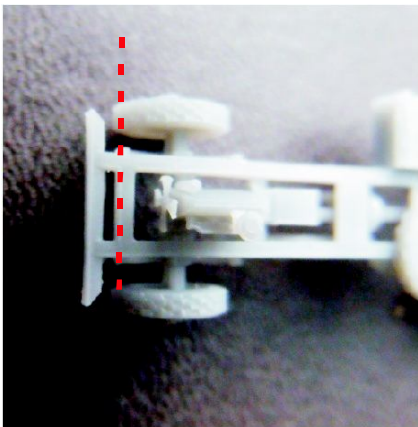
After cleaning up the bumps, paint the both the cab and the cargo bed olive and the entire chassis flat black. Once these have dried paint the wheel hubs, fuel tank, tool box and front bumper olive using a fine brush. Apply a coat of gloss to the cab, let dry and then place the decals as show below. After the decals are completely dry, apply dullcoat to the cab.

When everything is dry, glue the cab and the cargo bed onto the chassis using CA glue. See photo below for cab alignment.

Final Assembly



When gluing the cab to chassis, front of the cab should extend to red line



www.eaelec.com

Painting Guide & Decal Placement (US Army)

